

# Forest Co-op GYSU PGP Program

Forest Co-op Science Day

April 4, 2007

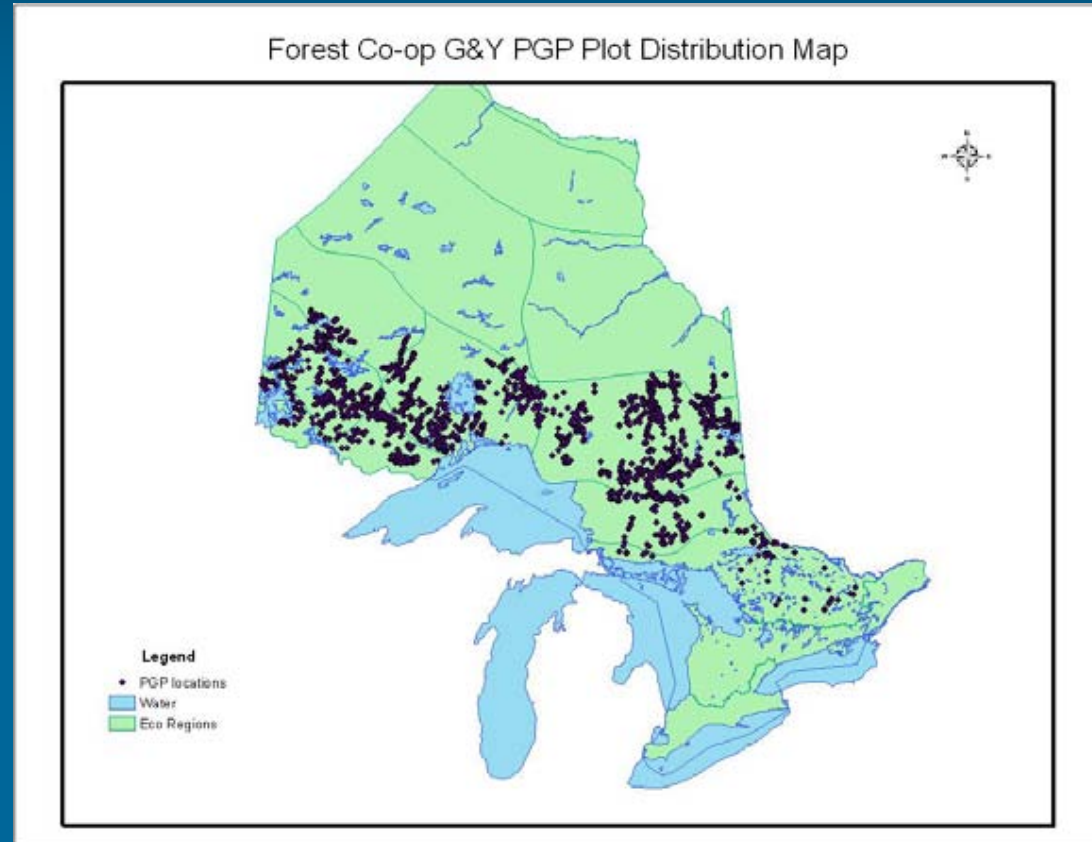
# Permanent Growth Plot (PGP) Program

- established in 1999
- network of permanent plots
- standard design and manual
- quality assurance
- measured aspects include
  - full tree inventory
  - height sample
  - age sample
  - regeneration sample
  - DWD sample

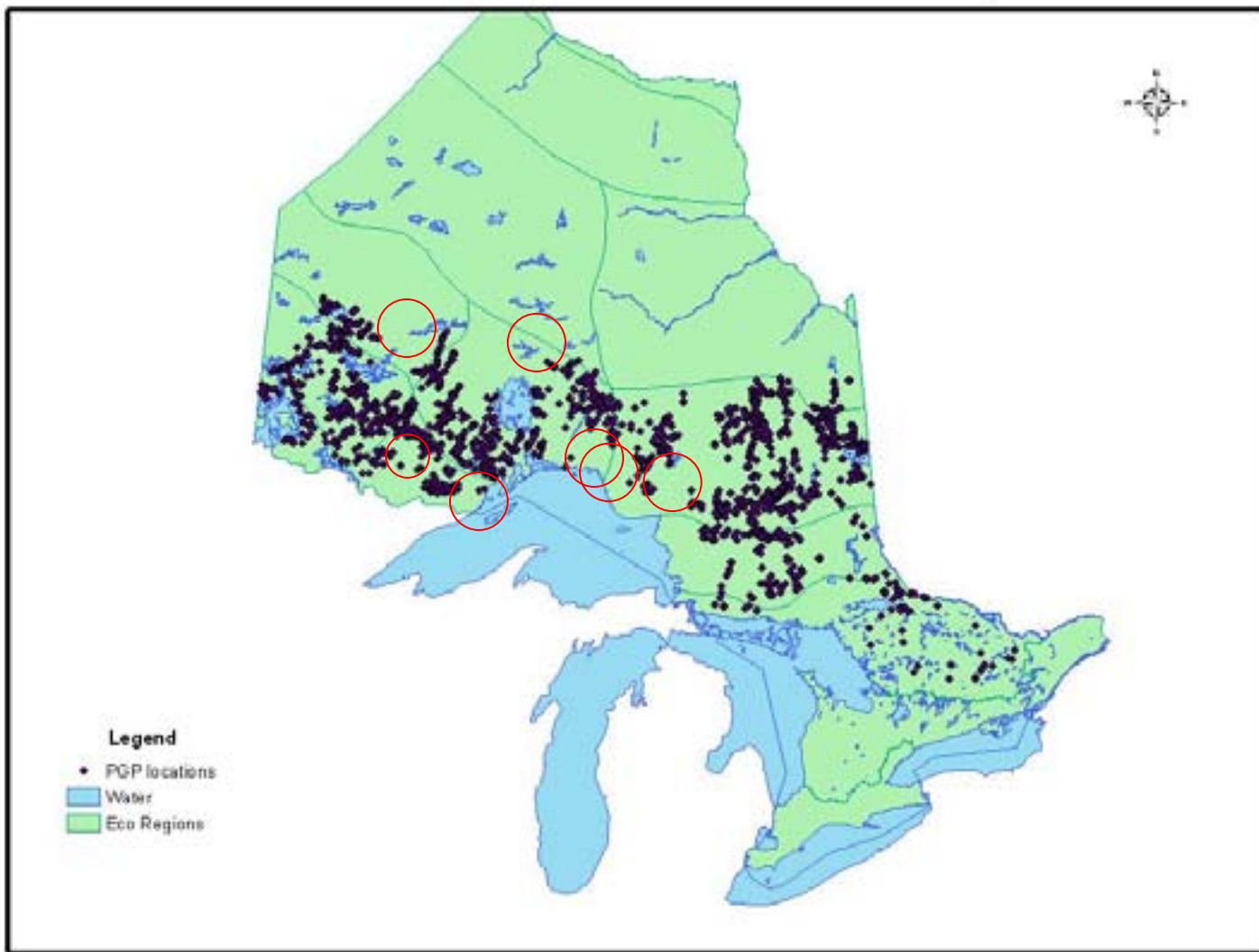


# PGP Program

- range of forest conditions
  - forest types
  - management regimes
- extensive geographic range
  - boreal
  - south-central
- strong partner participation



## Forest Co-op G&Y PGP Plot Distribution Map



# Program Value

- cornerstone of the Forest Co-op GYSU
- vast wealth of growth & yield science and information
- utilized by program partners and numerous researchers and analysts
- tool and model development

# Strengths

- strong partnerships
  - continued support
- leveraging opportunities
  - Living Legacy Trust
  - Forestry Futures Trust
- strong and sustained program

# Priorities

- first 5 years geared to plot establishment
- shift to re-measurement
- under-represented conditions

# 2006/2007 Program

- south-central region
  - yellow birch, red oak
- boreal region
  - over 450 5<sup>th</sup> year re-measurements
  - 60 establishments
  - 40 additional measurements

# 2007/2008 Program

- south-central region
  - plantation re-measures
- boreal region
  - approx. 450 5<sup>th</sup> year re-measurements
  - 60 establishments
  - 60 additional establishments

