

---

# Growth and Yield Science Unit

**Forest Co-op Science Day  
April 22, 2008**



# GYSU Partners

---

- AbitibiBowater
- Buchanan Forest Products Ltd.
- Confederation College
- Domtar Inc.
- Geospatial Consulting
- Natural Resources Canada
- Ontario Ministry of Natural Resources
- Sumac Forest Information Services Ltd.
- Tembec Enterprises Inc./Forestry Research Partnership
- Weyerhaeuser Company Ltd.



## Mandate

---

- To provide a forum for members and researchers to collaborate on projects of common interest
- To leverage partners funds to do more than any individual partner can do.



# PGP Network

---

Established and re-measurement protocol

- Patterned after the provincial PSP
- Peer Reviewed
- Consistent

Plot Priorities based on

- Geographic voids
- Site Type representation
- Complexity of sites
- Management regimes

Consistent contractors

- Quality assurance
- Clean data entry
- Familiarity with location



# PGP Network

---

The network has grown over the past 9 years

- Establishment by GYSU in 1999
- Other projects add plots because a consistent protocol is being used
  - Shallow soils
  - Realized Gains
  - NEBIE
  - Prescribed burn

The plot data base is becoming a strategic data base

Tools for FMP are being built

Researchers request the data for specific projects

NSERC- IPS

Government – Federally, Provincially

Members are asking for specific queries to answer specific questions



# Funding

---

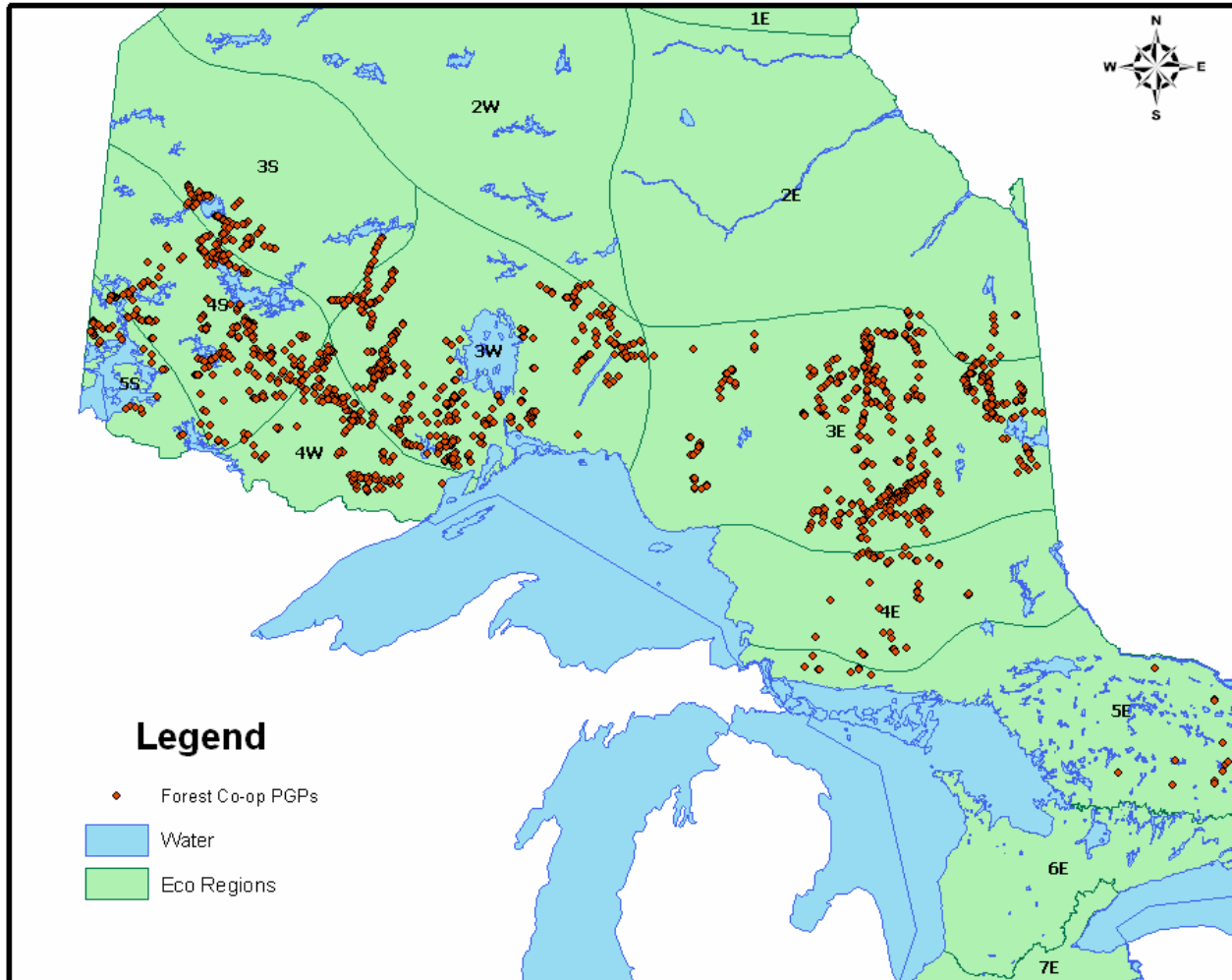
2007/08 was the last year of EFPSP

Industry and current MNR contributions will not cover the re-measurement of established plots

GYSU applied to the 10<sup>th</sup> anniversary fund to use the \$50,0000 to supplement member contributions.

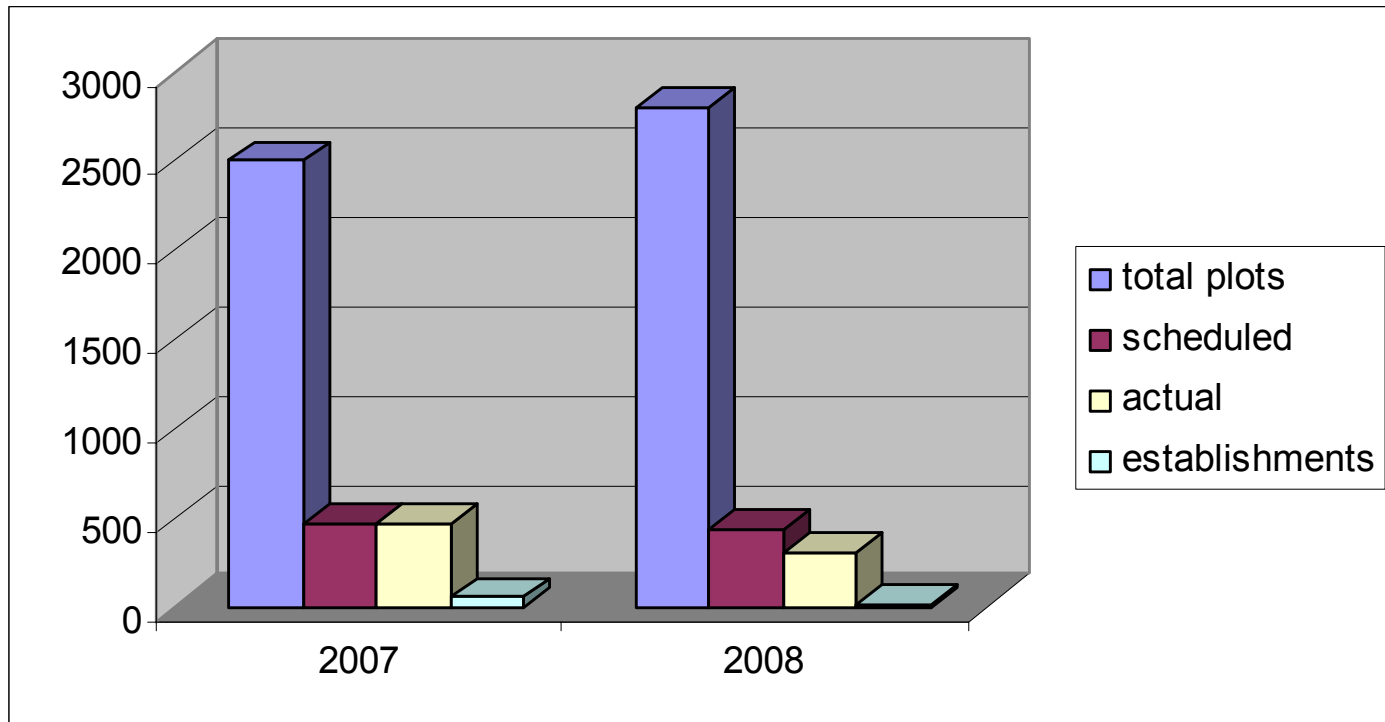


# Geographical Distribution of Plots



# Plot network

- Approximately 2800 PGPs established
- 2008 will be the first year where we will not be able to re-measure all plots scheduled.



# PGP Re-measurements

---

Re-think our re-measurement schedule

Priority given to:

- plots that expect significant change
- mainstream species
- SFLs needing data for FMPs

Plots dropped:

- Limited access
- Geographical areas that have few scattered plots

If more funds are available we have a priority list of plots to remeasure.



# Future for PGP Program

---

As predictable as the future of the forest industry

Continue to seek opportunities for matching funds

